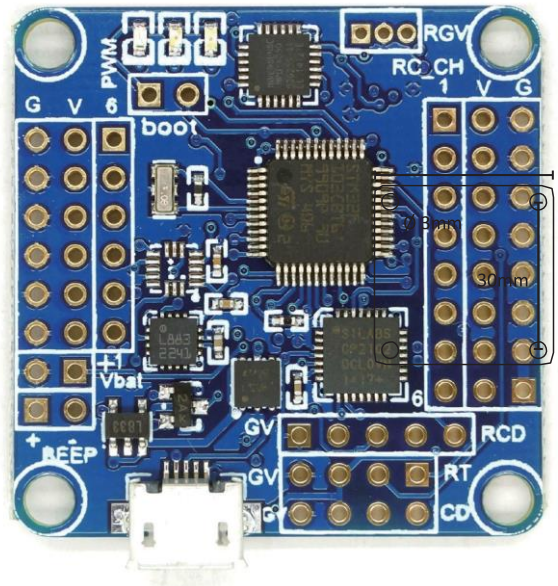
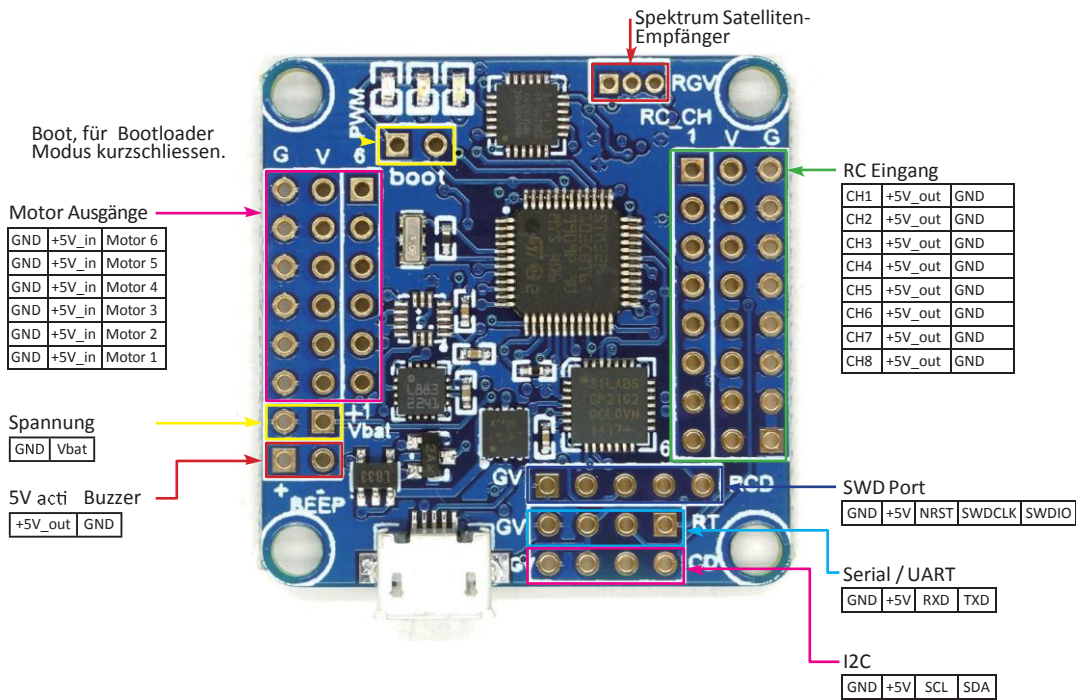


Flip32 (NAZE32)

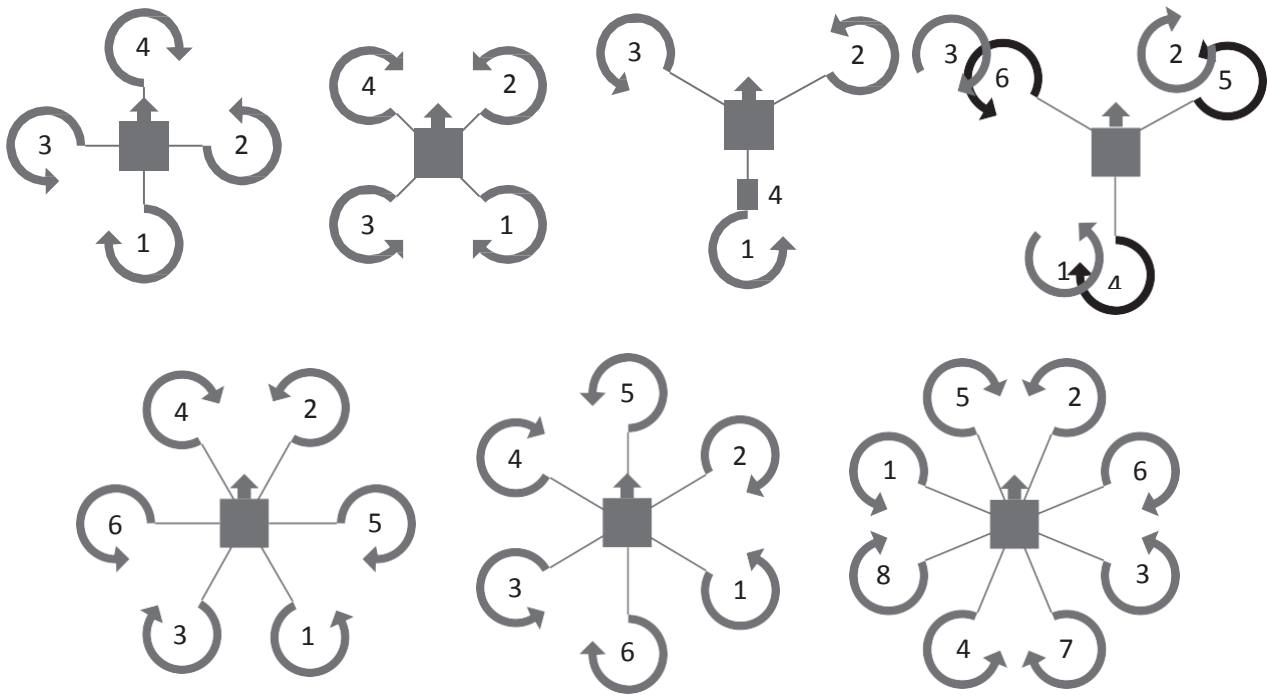
- Masse: 36 x 36 mm
- 3-axis MEMS gyro + accelerometer (MPU6050)
- Onboard Micro USB für Setup and Konfiguration
- Unterstützung für Quad / Hexa/ Tri/ Bi/ Y4/ Y6/ Octo/ sowie Camera Gimbal. (Standard ist Quad- X)
- Bis 8 Kanal RC input für Standard Empfänger (PWM), PPM Summensignal Empfänger wie FrSky (FASST), sowie Spektrum Satelliten Empfänger.
- Akku-Spannungs Messung
- Moderner 32-bit processor 3.3V/72MHz (STM32F103CB).



Anschluss Diagramm



Motoren Diagramm

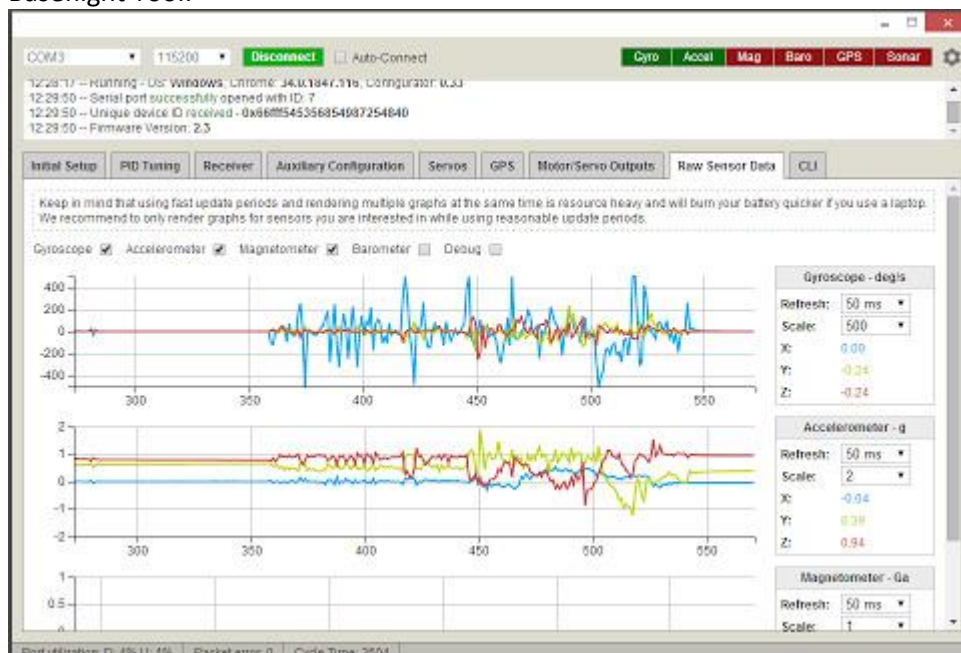


Software

Treiber USB Port:

<http://www.silabs.com/products/mcu/pages/usbtouartbridgevcpdrivers.aspx>

Baselight Tool:



<https://chrome.google.com/webstore/detail/baselight-configurator/mppkgnedeapfejgimkdoninnofofigk?hl=de>